

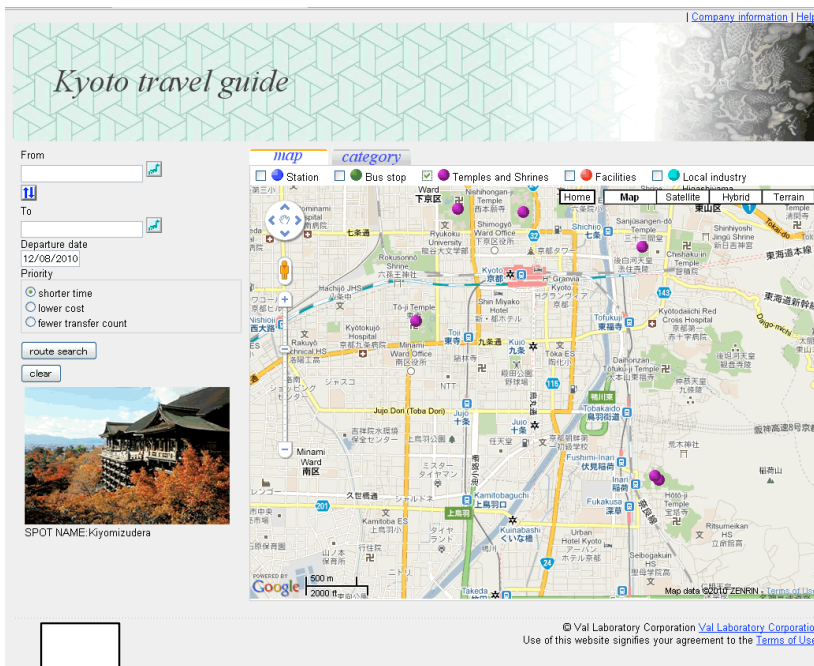
“Bus-Route Guidance Service” will be available

via iPad and websites for foreign travelers visiting Kyoto

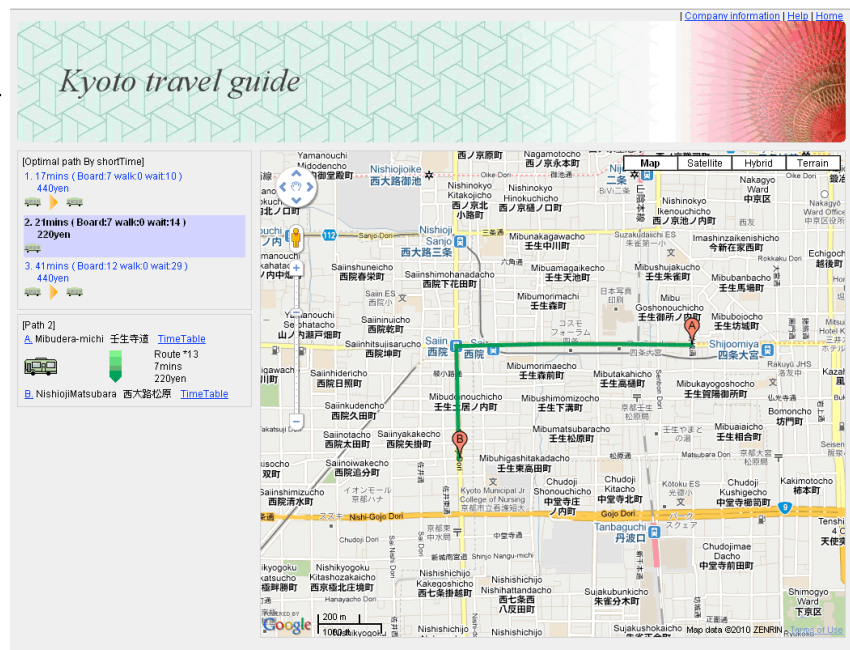
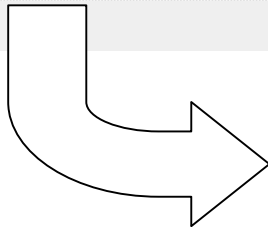
For Free

The City of Kyoto and cooperators will release a pilot “Bus-Route Guidance Service” on December 24th, organized by Japan Tourism Agency in an effort to promote “Hospitality Infrastructures for Foreign Travelers Visiting Japan.”

1. Contents of Service



This user friendly service can visually display the traffic routes (Kyoto City Bus / Subway) from present location to main tourist sites or bus stops nearby those destinations on a map, by enabling websites or iPad installed at guest houses and commercial facilities in the city.



*By and around the end of January 2011, information about tourist sites (pictures, descriptions etc.) will be provided while locations of iPad installation will be increased at the same time. Also, iPhone application will be released when completed.

2. Original locations for iPad installation

- Kyoto International Manga Museum
- Kyoto Hana Hostel
- Kyoto Handicraft Center (to be placed on 12/24)
- Gojo Guest House
- J-Hoppers Kyoto
- Daimaru Kyoto
- Takashimaya Kyoto
- Kyoto Utano Youth Hostel (to be placed on 12/24)
- Kyoto Tourist Information Center (to be placed on 12/24)

For more information...

(URL for web)

<http://www.kyotocitybusguide.net>

(Questionnaire site)

<https://reg34.smp.ne.jp/regist/is?SMPFORM=tdm-sbmg-1e5ee2378932b26b3707ce544bb10d49&SMPREFVAL=https://ctr34.smp.ne.jp/spiral/servlet/remote.Regist3&SMPREFDIGEST=7241bf55e2c7dcaa13a6a7d30cafe66e>